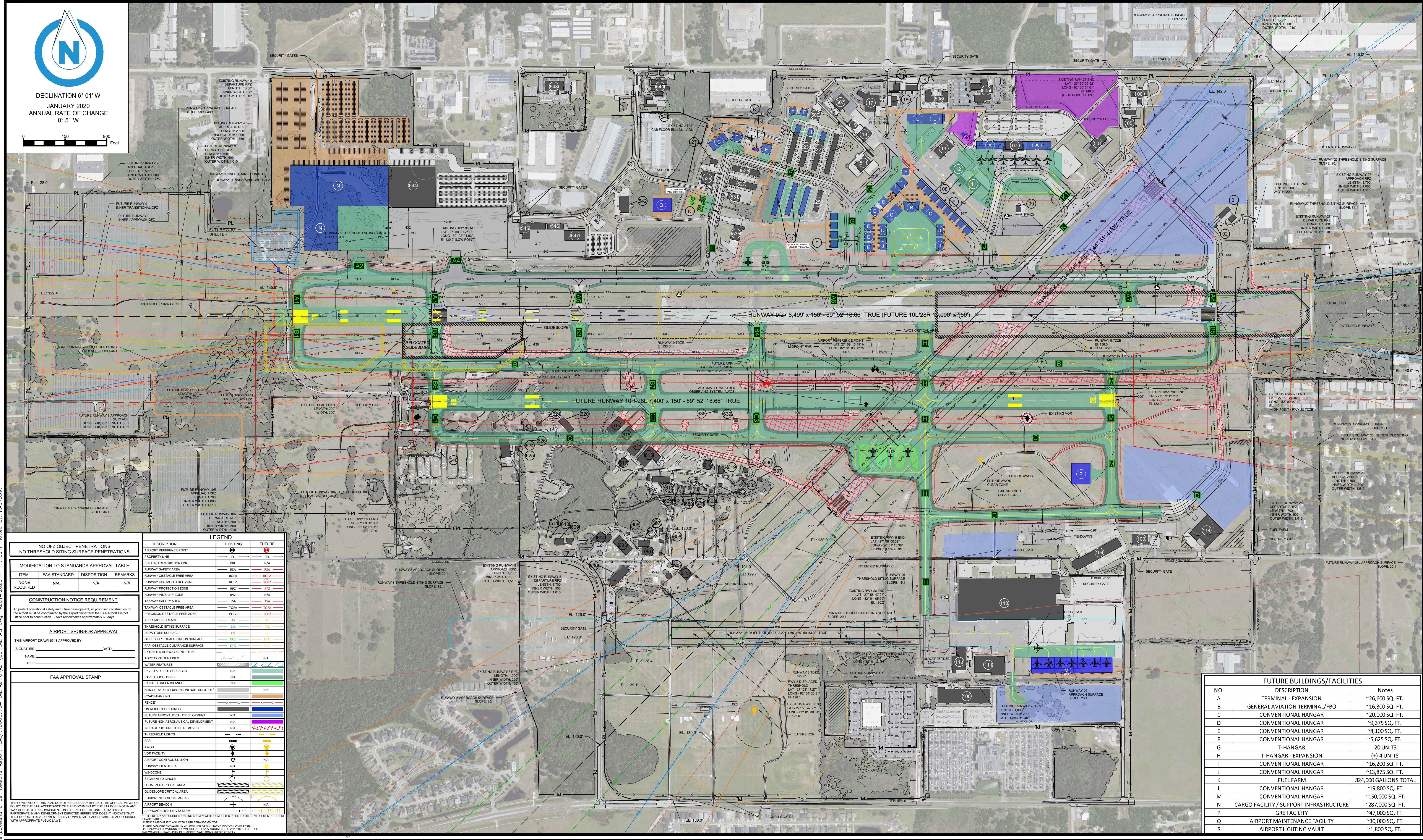
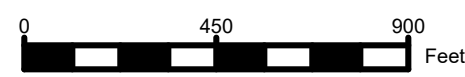




DECLINATION 6° 01' W  
 JANUARY 2020  
 ANNUAL RATE OF CHANGE  
 0° 5' W



**NO OF OBJECT PENETRATIONS**  
 NO THRESHOLD SITING SURFACE PENETRATIONS

**MODIFICATION TO STANDARDS APPROVAL TABLE**

ITEM	FAA STANDARD	DISPOSITION	REMARKS
NONE	N/A	N/A	N/A

**CONSTRUCTION NOTICE REQUIREMENT**

To protect operational safety and future development, all proposed construction on the airport that is controlled by the airport owner with the FAA Airport District Office prior to construction. FAA's review takes approximately 60 days.

**AIRPORT SPONSOR APPROVAL**

THIS AIRPORT DRAWING IS APPROVED BY: \_\_\_\_\_ DATE: \_\_\_\_\_  
 (SIGNATURE) \_\_\_\_\_

NAME: \_\_\_\_\_  
 TITLE: \_\_\_\_\_

**FAA APPROVAL STAMP**

**LEGEND**

DESCRIPTION	EXISTING	FUTURE
AIRPORT REFERENCE POINT	PL	PL
PROPERTY LINE	FPL	FPL
BUILDING RESTRICTION LINE	BRL	N/A
RUNWAY SAFETY AREA	RSA	RSA
RUNWAY OBSTACLE FREE AREA	ROFA	ROFA
RUNWAY OBSTACLE FREE ZONE	ROFZ	ROFZ
RUNWAY PROTECTION ZONE	RPZ	RPZ
RUNWAY VISIBILITY ZONE	RVZ	N/A
TAXIWAY SAFETY AREA	TSA	TSA
TAXIWAY OBSTACLE FREE AREA	TOFA	TOFA
Precision OBSTACLE FREE ZONE	POFZ	POFZ
APPROACH SURFACE	AS	AS
THRESHOLD SITING SURFACE	TS	TS
DEPARTURE SURFACE	DS	DS
GLIDE SLOPE QUALIFICATION SURFACE	GQS	GQS
PAVING OBSTACLE CLEARANCE SURFACE	OCS	OCS
EXTENDED RUNWAY CENTERLINE	EC	EC
TOPO CONTOUR LINES	N/A	N/A
WATER FEATURES	N/A	N/A
PAVED AIRFIELD SURFACES	N/A	N/A
PAVED SHOULDERS	N/A	N/A
PAINTED GREEN ISLANDS	N/A	N/A
NON-SURVEYED EXISTING INFRASTRUCTURE	N/A	N/A
ROADS/PARKING	N/A	N/A
FENCE	N/A	N/A
ON AIRPORT BUILDINGS	N/A	N/A
FUTURE AERONAUTICAL DEVELOPMENT	N/A	N/A
FUTURE NONAERONAUTICAL DEVELOPMENT	N/A	N/A
INFRASTRUCTURE TO BE REMOVED	N/A	N/A
THRESHOLD LIGHTS	N/A	N/A
PAPI	N/A	N/A
PARIS	N/A	N/A
VOR FACILITY	N/A	N/A
AIRPORT CONTROL STATION	N/A	N/A
RUNWAY IDENTIFIER	N/A	N/A
WINDCONE	N/A	N/A
SECURITY GATE	N/A	N/A
LOCALIZER CRITICAL AREA	N/A	N/A
GLIDE SLOPE CRITICAL AREA	N/A	N/A
EQUIPMENT CRITICAL AREAS	N/A	N/A
AIRPORT BEACON	N/A	N/A
APPROACH LIGHTING SYSTEM	N/A	N/A

**FUTURE BUILDINGS/FACILITIES**

NO.	DESCRIPTION	Notes
A	TERMINAL - EXPANSION	~26,600 SQ. FT.
B	GENERAL AVIATION TERMINAL/FBO	~16,300 SQ. FT.
C	CONVENTIONAL HANGAR	~20,000 SQ. FT.
D	CONVENTIONAL HANGAR	~9,375 SQ. FT.
E	CONVENTIONAL HANGAR	~8,100 SQ. FT.
F	CONVENTIONAL HANGAR	~5,625 SQ. FT.
G	T-HANGAR	20 UNITS
H	T-HANGAR - EXPANSION	(+ 4 UNITS)
I	CONVENTIONAL HANGAR	~16,200 SQ. FT.
J	CONVENTIONAL HANGAR	~13,875 SQ. FT.
K	FUEL FARM	824,000 GALLONS TOTAL
L	CONVENTIONAL HANGAR	~19,800 SQ. FT.
M	CONVENTIONAL HANGAR	~150,000 SQ. FT.
N	CARGO FACILITY / SUPPORT INFRASTRUCTURE	~287,000 SQ. FT.
P	GRE FACILITY	~47,000 SQ. FT.
Q	AIRPORT MAINTENANCE FACILITY	~30,000 SQ. FT.
R	AIRPORT LIGHTING VAULT	~1,800 SQ. FT.

**REVISIONS**

DATE	DESCRIPTION

CLIENT

PROJECT

**AIRPORT MASTER PLAN UPDATE**

LAKELAND LINDER INTERNATIONAL AIRPORT  
 LAKELAND, FLORIDA

SHEET TITLE

**AIRPORT LAYOUT PLAN**

**ATKINS**  
 Member of the SNC-Lavalin Group

4030 West Boy Scout Blvd. | Tel. (321) 775-6231  
 Suite 700  
 Tampa, Florida 33607  
 www.atkinsglobal.com/northamerica

JOB NO.: 10057734  
 DRAWN: KK, CH  
 DESIGN: KK, CH  
 CHECKED: GF  
 DATE: AUGUST 2020

SHEET **3** OF **23**